

TL-RKMC-14

14 Slot Rack-Mount Media Converter Chassis with Two Integrated Power Supplies



The ENET TL-RKMC-14 accommodates up to 14 media converters in a single unit. The media converter chassis allows hot-swapping the media converters, and provides strong redundancy due to its two integrated power supplies. Two high-volume cooling fans ensure a cool operating environment.

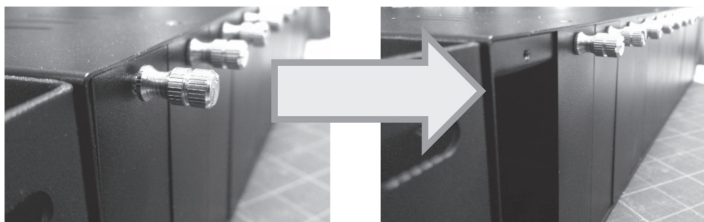
Compatible media converters: TL-MC-1S1R, TL-MC-1S1S, TL-MC-1S2R, TL-MC-2SC1R-MM, **and** TL-MC-2SC1R-SM.

Features

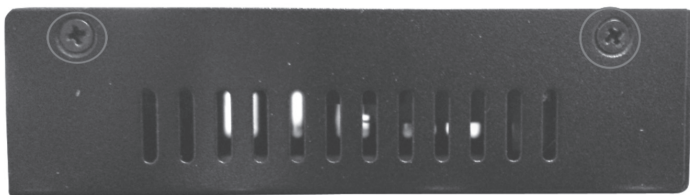
- High-quality 19" rackmount steel chassis
- Supports up to 14 stand-alone media converters
- Two internal 100 – 260V universal switching power supplies avoid network downtime and protect your converter investments
- Power supplies support load sharing, and circuit-breakers
- protect against over voltage and short circuits
- Two high-volume cooling fans ensure perfect ventilation
- Slot power isolation ensures each slot is electrically isolated from the next

Installation

1. Remove the slot cover by turning the screw counter clockwise.



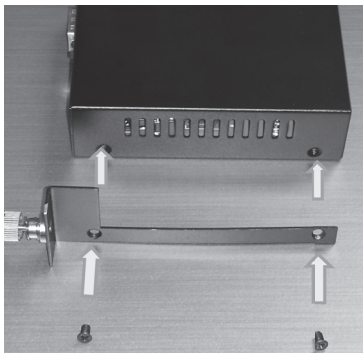
2. Unscrew the two screws on the side of the media converter housing, as indicated by the circles.



Note: You need to attach the bracket to the side of the media converter, on which the power plug is located. Check the rear of the media converter housing to find out on which side the carrier brackets needs to be connected to.



3. Use these screws to affix the carrier bracket to the media converter housing.



4. Insert Media Converter into the chassis, and then tighten the screw by turning it clock-wise.
5. Install the chassis in a standard 19" rack or cabinet. Connect both power supplies with a power outlet and set them both to the ON position.



Maintenance & Troubleshooting

- Always power on both power supplies by setting both power buttons to the on position. Doing so will significantly increase the life-span of the power supplies.
- At dangerous power levels, the rear POWER LED will turn red.
Disconnect the chassis from the power at once.
- If the fuse on the rear has blown, the POWER LED will turn off. Disconnect the chassis from the power and replace the fuse. Power the chassis back on. If the fuse breaks again, discontinue use of the chassis at once.



- If one of the chassis fans stops working, discontinue use of the chassis at once.
- If a media converter stops functioning, try resetting the media converter in the chassis to ensure proper contact of the power connectors.

