

CORE™

WALLMOUNT ENCLOSURES



◀ **Removable Inner CORE**
Allows for table-level access
for splicing, plugging,
cleaning and organization

OPEN

* Can be purchased
FULLY LOADED as pictured



CLOSED

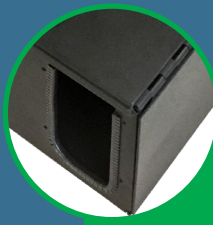


PATENTED

FEATURES



Dual Hinged Enclosure - Allows for
ultimate access



**Grommeted Non-captive Entry
Portals** - Protects cables from sharp
edges and makes future moves, adds,
and changes easier



Bubble Level - Included inside
enclosure for easy installation



2019.10.03

MORE FEATURES

- Dual Hinged front
- Lockable front and rear entry
- Bubble level included inside enclosure
- Non-Captive side and rear entries for trunks
- Large tie-down areas at all entry/exit points
- Wall-mountable unit

ORDERING INFORMATION

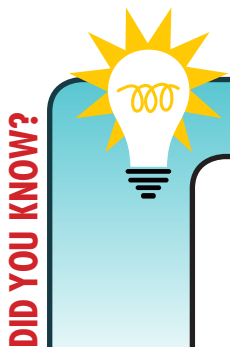
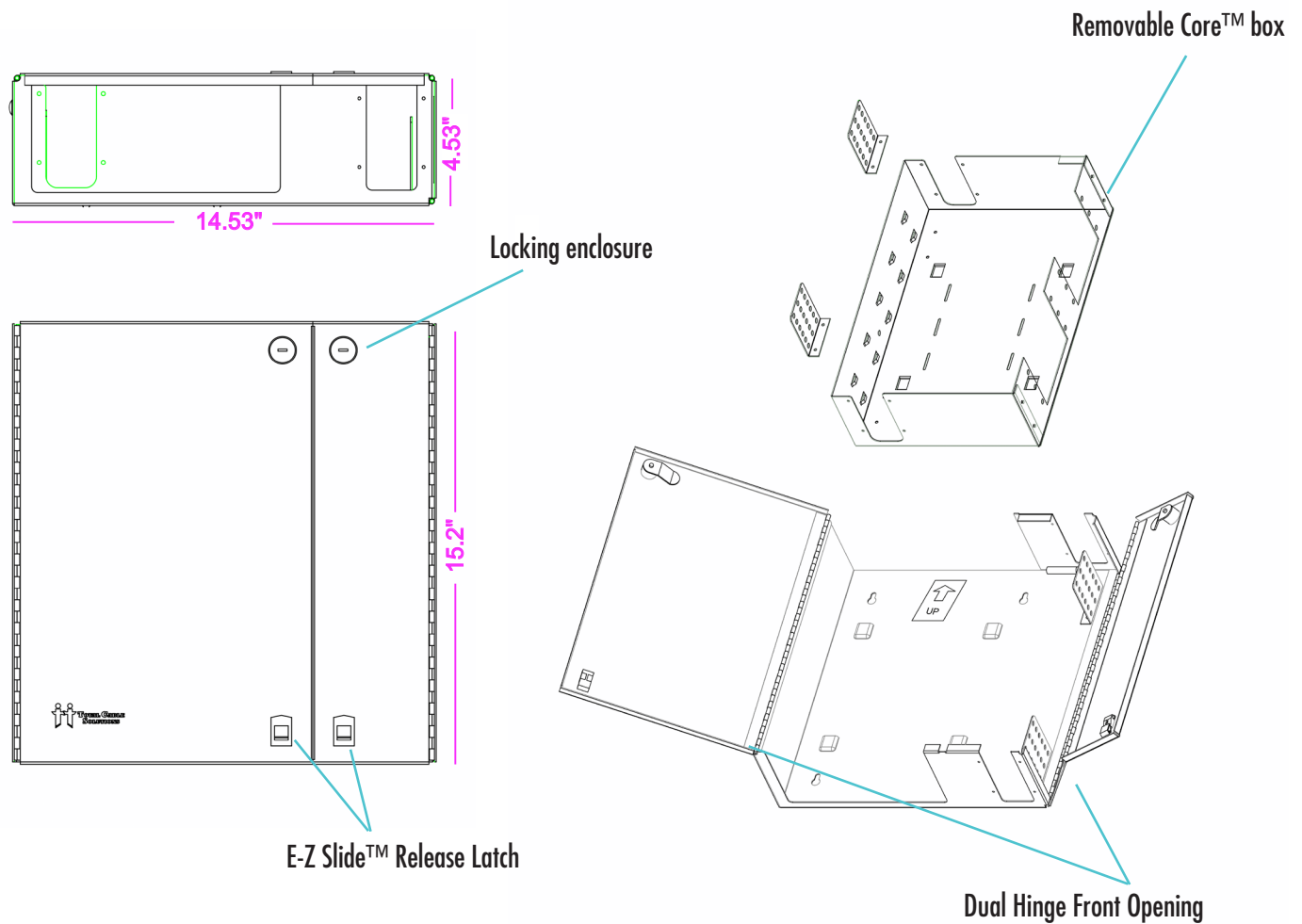
PN: FPP-06-W-21

SPECIFICATIONS

- Dimensions: 14.5" W x 4.5" H x 15.2" D
- Material: 16AWG Steel
- Coating: Electrostatic polyester powder coat black paint

WHAT'S INCLUDED

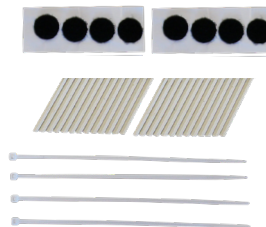
- 2 Enclosure keys
- 6 Velcro® tie-downs
- 1 Velcro® strap
- 4 entry-point grommets
- 8 zip ties



Total Cable Solutions offers Splice Trays and sleeves for all your splicing needs.



ST-M-24 24 Metal Fiber Splice Tray



ST-FPS-60mm-50
60mm Splice Sleeves